



Overview

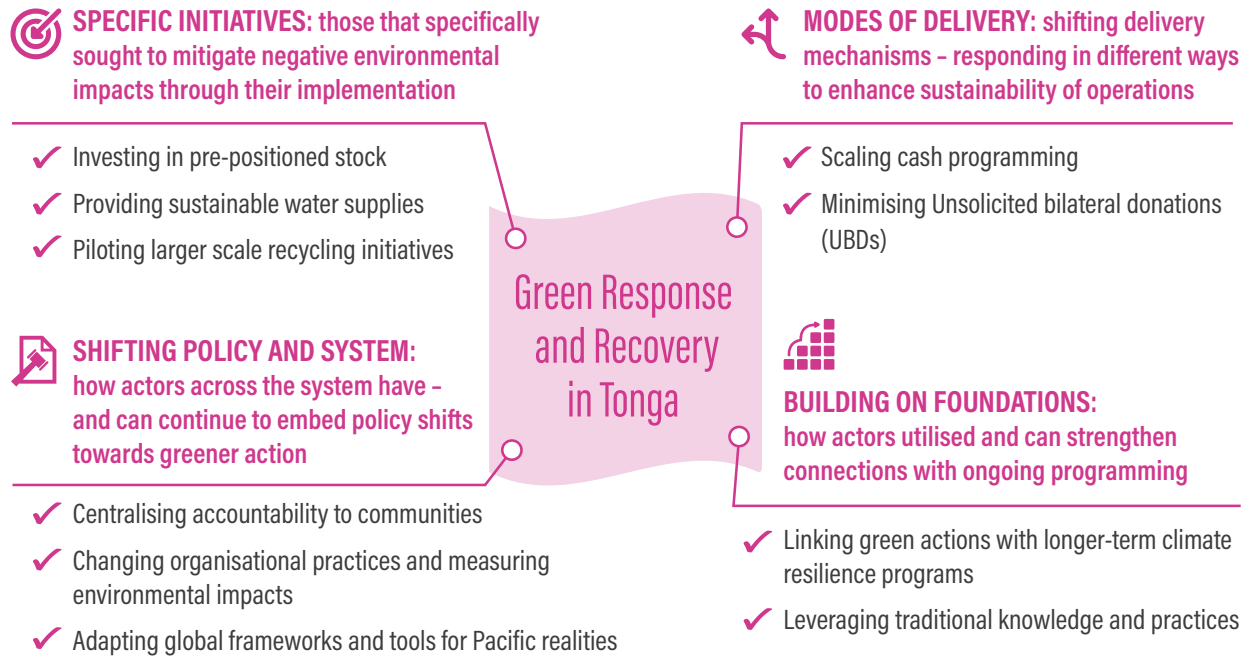
This practice paper explores the response to the Tonga volcanic eruption and tsunami through a 'green response' lens. It provides a rapid analysis of emerging evidence to generate conversations for response and recovery planning, and to inform decision-making and review processes for humanitarian stakeholders in Tonga and the Pacific more widely.

Methods



What we found

Community perceptions highlight there is awareness of the importance of environmental considerations for support they receive, such as NFIs and packaging of supplies. This presents an opportunity to continue to build awareness and momentum with communities towards greener humanitarian action. Four categories of action that have emerged that can drive greener response and recovery are outlined below.



Opportunities for recovery and the future in the Pacific

The Tonga volcano and tsunami response has showcased opportunities for the humanitarian sector to shift towards a systematic green approach in the Pacific. The [full paper](#) outlines these opportunities, which are accompanied by guiding questions for preparedness and recovery phases (see pages 22-23).

Read the full paper [here](#). If you'd like to learn more about our work, please contact: info@humanitarianadvisorygroup.org