



Overview

Humanitarian Advisory Group, GLOW and CoLab undertook this research to determine what is known about the impact of localisation; the barriers to measuring localisation impact; and to propose an approach to overcoming those barriers and documenting change. The objective of the research was to support humanitarian actors to better define and understand the impact of their localisation practices on crisis-affected populations. This paper outlines a clear three-step pathway to measure and understand change and demonstrate impact for crisis-affected communities (see Figure 1 below).

Methods

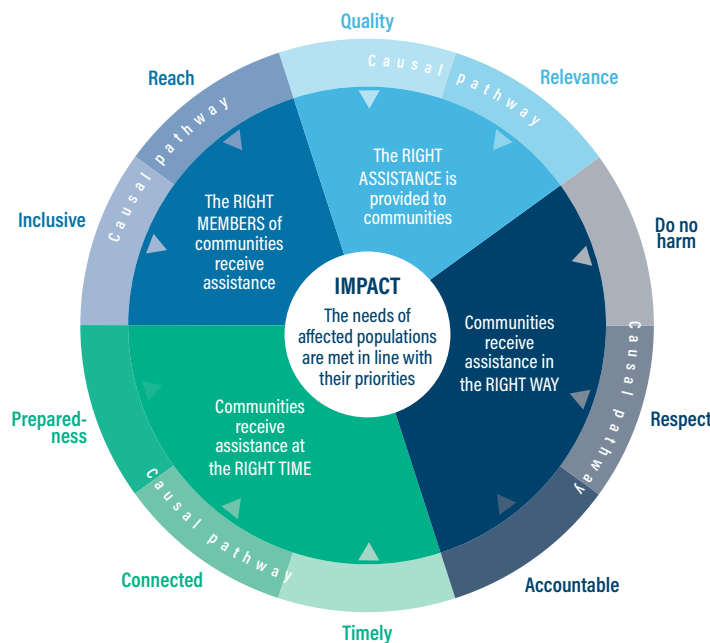


What we found

This paper proposes a model for understanding the impact of localisation. The model includes the following components:

- Domains of change – broad areas of potential impact identified from previous studies, evaluations and research
- Potential benefits of localisation – specific benefits identified within the domains. Articulating these allows the model to specify what needs to be measured and understood within each domain
- Possible causal relationships – hypotheses about why localisation is creating benefits from the perspective of communities.

Figure 1: Potential domains of change as a result of localised practices



Why this is important

Building the evidence base for localisation impact is important for four reasons.

- Accountability: We need to understand if and how localised practices improve accountability with communities.
- Sustain momentum: The localisation agenda's momentum relies on humanitarian actors seeing positive changes.
- Informed decisions: Organisations must know their impact to make informed decisions about localised approaches.
- Evidence-based adoption: Even those who agree with localisation need evidence to adopt new practices.

What's next

The model has been tested through an accompaniment process, with three case studies in Pakistan, Bangladesh and the Philippines. Upon the conclusion of the accompaniment process in each context, the research team will reflect on what has been learned about the model and accompaniment process and prepare an approach to guide localisation impact measurement across the sector.

If you'd like to learn more about our localisation impact measurement work, or to get involved, please contact:
 Sara Phillips – sphillips@humanitarianadvisorygroup.org,
 Pamela Combinido – pcombinido@humanitarianadvisorygroup.org,
 or Jess Lees – jlees@humanitarianadvisorygroup.org