



## Overview

The humanitarian sector has made significant progress in measuring the process of localisation, with various frameworks and tools supporting organisations on their journey towards more localised humanitarian action.<sup>1</sup> Despite this progress, there is insufficient sector-wide understanding of if and how localised practices are benefiting affected communities. The lack of evidence regarding the impact of localisation has become an obstacle to progress towards more locally led humanitarian action.<sup>2</sup> Working within the Power and Local Leadership stream of the Humanitarian Horizons 2021–24 research program, HAG, GLOW Consultants, inSights, the Pujiono Centre, CoLAB and PIANGO set out to explore how to fill this gap.

Over the last three years, the research team sought to determine how to support the sector to measure localisation impact at the community level. The [first paper](#) put forward a model for impact measurement, which was then tested through an accompaniment process, with three case studies in [Pakistan](#), [Bangladesh](#) and [the Philippines](#). The framework offers detailed guidance for implementation with key partners with tools and examples for each impact area.

1 Including, for example, Global Mentoring Initiative's Seven Dimensions of Localisation, PIANGO and HAG's Measuring Localisation Framework, and NEAR's Performance Measurement Framework – Accelerating Localisation through Partnership: Global Localisation Framework.  
 2 HAG, CoLAB & GLOW (2023), [A pathway to localisation impact: Laying the foundations](#). Melbourne: HAG; HAG (2024), Evidence to influence more effective, efficient and equitable action – The missing link in localisation, London: Start Network (forthcoming)

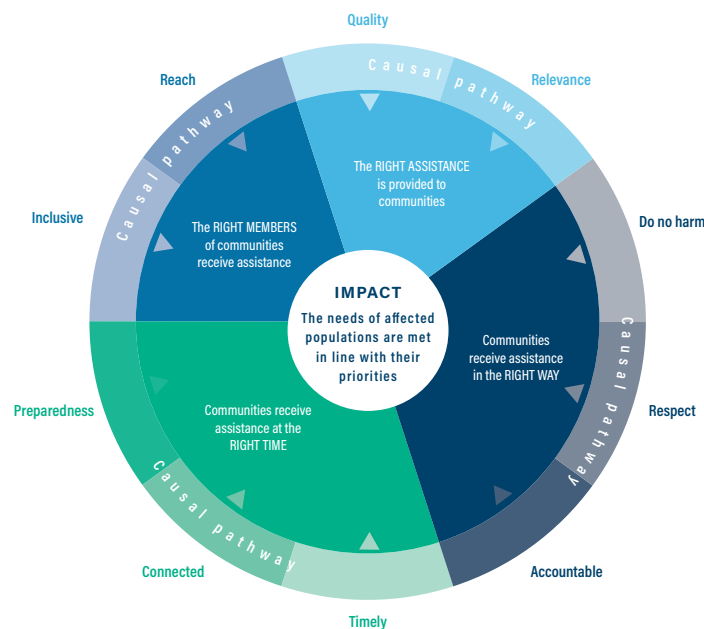
## Snapshot of the framework

### What does the framework offer?

A **model** (see below) and **approach** to articulating and measuring the community-level impact of localised practices in humanitarian action.

### What is the model?

The **model** includes four areas in which localised practices may have impact: the *right assistance* is provided to communities; communities receive assistance in the *right way*; communities receive assistance at the *right time*; and the *right members* of communities receive assistance. Within each area are domains of change (see below) in which we expect to see positive impact because of localised practices.



### What is the approach to measurement?

The **approach** supports actors to articulate intended outcomes and use logic chains and indicators to measure the impact of localised practices in each of the four areas and associated domains of change.

The approach can guide measurement between intermediaries and local and national partners, mapping inputs in key complementary areas to measure to what extent these are contributing to changes at the community level.

It should be used *at the start* of an intervention (e.g project, program, response) but can be used across preparedness, response and recovery phases. The approach has intentionally been designed so that it can sit within existing design, monitoring and evaluation processes (rather than standalone), though at the outset, it may still require some targeted investment.

### Who can use the framework

This document can be used by the following stakeholder groups in the following ways:

Local and national actors can use it to define objectives and track the impact of their localised practices at the community level. It can be used with intermediary partners to develop shared objectives and measurement processes.

Intermediaries can use it to identify the intended impact of their localisation activities. Intermediary partners can use it, in collaboration with their local/national partners, to develop shared objectives and measurement processes, and to define and measure the impact of their localised activities.

Donors can use it when considering the domains of impact in policy frameworks and setting the objectives of their localised activities.

### What does the document include

For each of the four areas, this document includes:

- working versions of *intended impact statements*, aligned to the *domains of change*
- *potential logic chains* as the basis for a *project log frame*
- an *example measurement matrix*, and
- applied examples of how to measure change for each area.

It also provides an overview of *how to use the framework*, to guide users to put it into practice.

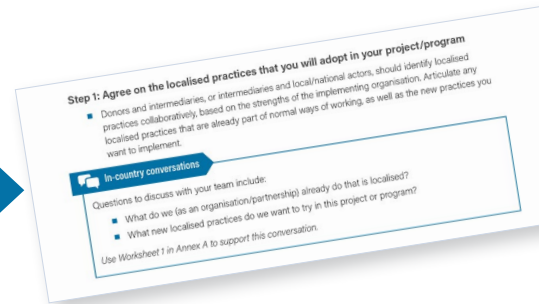
The intention is for these to be used as a starting point that can be adapted and contextualised for specific programs.

## How to use the framework

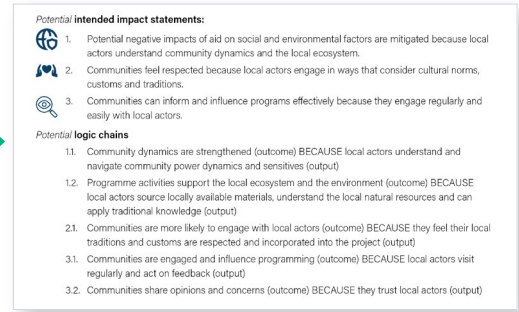
The full document provides a step-by-step guide to applying the model and measuring localised practices in your context. A high level overview of the steps is provided below.

1. Agree on the localised practices that you will adopt in your project/program
2. Define the priority areas (e.g. the right members of communities receive assistance) and the intended domain/s of change (e.g. reach or inclusive) that are relevant to your program
3. Define intended impact statements that correlate to the domains of change
4. Identify the logic chains that correspond to your impact statements
5. Develop indicators that correspond to the components of the logic chains
6. Measure, adapt and learn
7. Communicate your evidence and learning

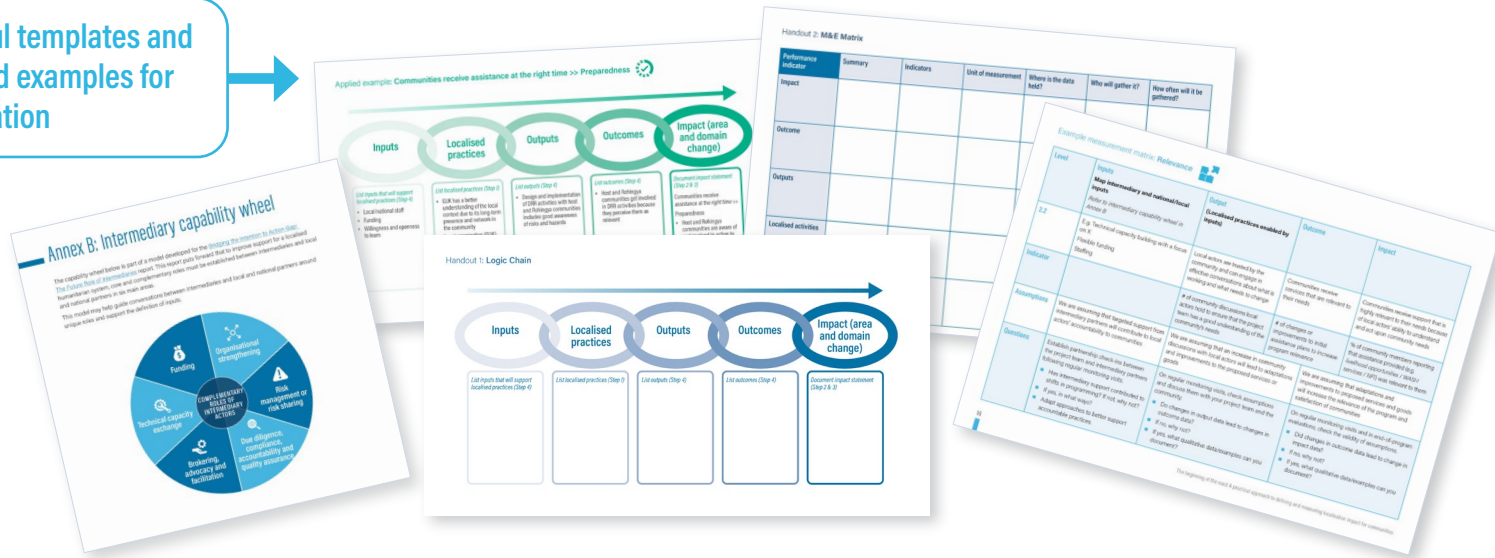
Each step is unpacked in further detail including in-country conversation guides and worksheets



Includes sample intended impact statements and logic chains



Helpful templates and applied examples for inspiration



Read the full paper [here](#). If you'd like to learn more about our work, please contact: [info@humanitarianadvisorygroup.org](mailto:info@humanitarianadvisorygroup.org)